

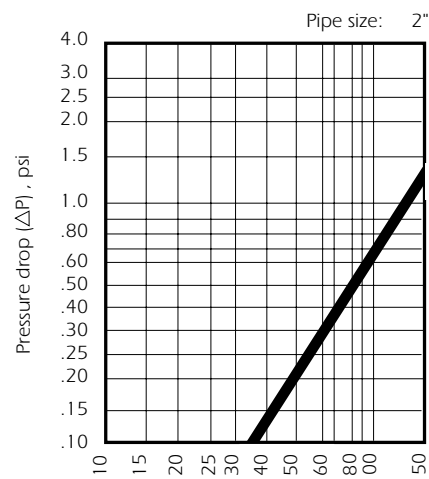
## **R** Model 8-125 psi Bag Filters

Low cost filter housings for flow rates to 100 gpm\*

These high-capacity bag filters or basket strainers are very low in cost and offer large dirt holding capacity. These housings are made from carbon steel or stainless steel. They use a newly designed clamp cover that is easily removed, reducing time spent on bag change-out. The O-ring seal on the cover ensures a seal. This housing also utilizes our Unistyle design offering you the option of a side or bottom outlet. There is a 2-inch outlet on the side with a 2-inch plugged drain at the bottom of the housing. The outlet can easily be changed to the bottom by merely moving the plug from the drain to the side outlet.

### Features

- Permanently piped housings are opened without special tools
- Quick opening cover
- Carbon or stainless steel housings
- Adjustable-height tripod legs
- O-ring seals: Buna N, EPR and Viton®
- 125-psi rated housing
- Basket material is compatible with housing
- Uses standard number 2 size bags and baskets
- Bag/Basket surface area is 4.4 square feet
- 2-inch NPT ports



\*Based on housing only. Fluid viscosity, filter bag used, and expected dirt loading should be considered when sizing a filter.

## How To Order

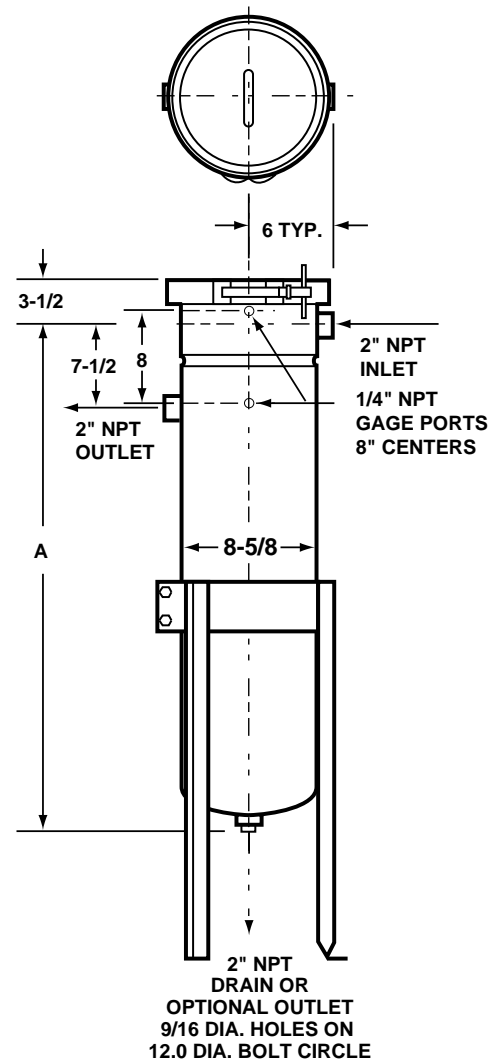
Low Pressure  
Model 8 Housing

Build an ordering code as shown in the example

	Housing	Options
<b>Example:</b>	<b>830 - 2P - * - 125 - C - B - PB</b>	
<b>REDUCED-PRESSURE MODEL 8</b>	= 815 = 830	
<b>PIPE SIZE</b> 2-inch female NPT	= 2P	
<b>OUTLET STYLE</b> Side/Bottom Unistyle=	*	
<b>PRESSURE RATING</b> 125 psi	= 125	
<b>HOUSING MATERIAL</b> Carbon steel 304 Stainless steel	= C = S	
<b>COVER SEAL</b> Buna N Ethylene propylene Viton® Fluorelastomer	= B = E = V	
<b>BASKET TYPE</b> Filter bag basket	= PB	

1. Filter bags are specified separately. See page 106-109.

## Dimensions (IN)



## Dimensions

Model	A
815	21.1
830	35.9